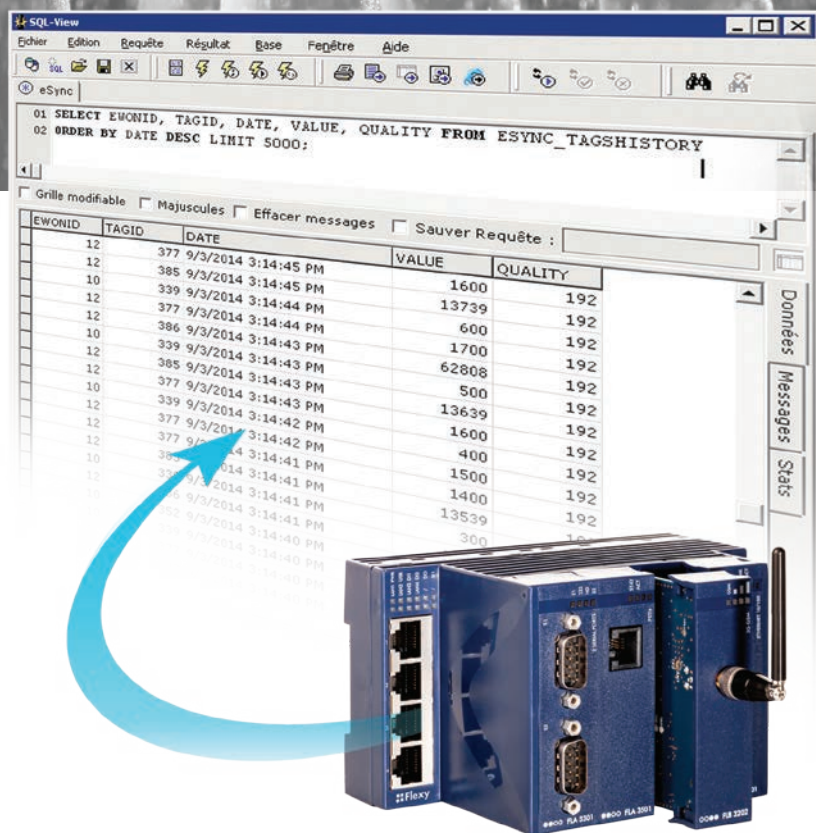


**Collect your
remote site data.**

eSync
for eWON

**Remote Data
Connector
Software**

www.ewon.biz



What is eSync ?

eSync is a data connector software that lets you concentrate and synchronize eWON historical data and alarms in a central server location. With eSync, system integrators can easily integrate remote data into third party applications.

makes remote data collection a child's play

DATA ACQUISITION

The eWON Flexy I/O server lets you extract data from any connected devices. Time-stamped data can be stored in the eWON internal memory. Real-time values can also be accessed easily.

EASY CONFIGURATION AND SCHEDULING

eSync is based on a Web server (Apache) that allows easy configuration through web pages (PHP) as well as data reception from the remote eWON using the "Post HTTP" function. The upload interval and trigger mechanism are set up in the eWON router itself. Data transfer can be initiated on Alarm/Event, using the eWON Planner or by scripting.

OPTIMIZED DATA TRANSFER PROTOCOL

Data upload is managed automatically and efficiently. The eWON router never sends the same data twice. Such synchronization with the server is especially important in the event of cellular connections.

FLEXIBLE OPERATING MODE

- 1 **Internet:** If eSync is accessible and visible from the Internet, the remote eWON can connect to it using an Internet connection (wired or wireless).
- 2 **Talk2M** makes things smarter. With its integrated M2M data service, the remote eWON uploads its data through a secure VPN tunnel. Talk2M acts as a relay to forward the data (using HTTPS) to eSync.
- 3 The **eFive** VPN appliance makes the secure bridge between eWON and eSync

DATABASE BUFFERING

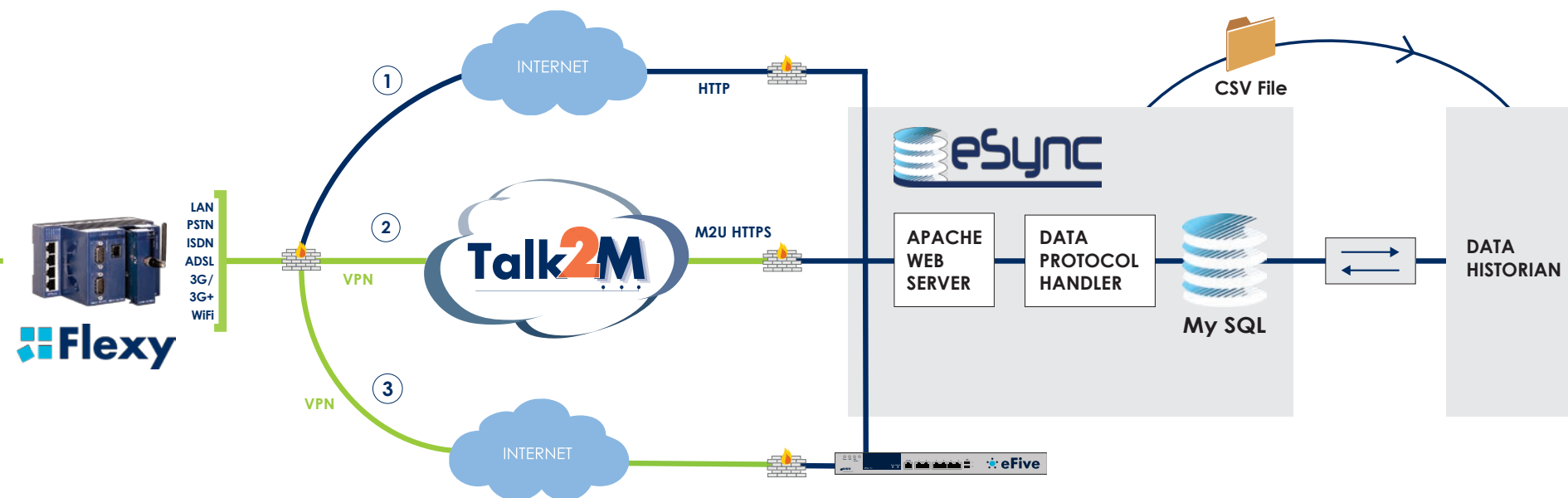
The eWON data are stored in a MySQL database, which acts as a temporary data buffer. An external software package periodically extracts data from the MySQL database and feeds your application database, which will act as your data historian repository. The oldest data in the eSync database are automatically deleted.

DATA FILE REPOSITORY

As an alternative to database buffering, eSync can also produce CSV files with all new data. This can be a useful option if your application software (Historian, reporting software, SCADA) is able to manage CSV files to upload data.



- MODBUS RTU
- MODBUS TCP
- Unitelway
- DF1
- EtherNet/IP™
- PPI
- MPI (S7)
- PROFIBUS (S7)
- ISO TCP
- FINS Hostlink
- FINS TCP
- Mitsubishi FX
- Hitachi EH
- ASCII



eSync is a secure data connector between remote eWON time-stamped values and alarms and a central server location. Collecting data from your remote assets allows added-value services such as energy efficiency, process optimization, predictive maintenance, regulation compliance, down-time reduction, proactive customer service monitoring and reporting. Thanks to the smooth integration of the eWON M2M data gateway and eSync data connector, remote data collection has never been so easy!

Activate your remote data collection application

About eFive:



The eFive makes the perfect bridge between your remote site and your SCADA in a wide range of applications. Two different versions are proposed: the eFive 25 and the eFive 100 allowing up to 50 and 200 permanent remote VPN connections, respectively. Both are designed for easy deployment and management through an embedded Web-based user interface.

www.ewon.biz/eFive

About Talk2M:



Talk2M is the first secure industrial connectivity service in the cloud. With servers all over the world, Talk2M offers a highly reliable, efficient and secure solution for connecting to machines remotely. Talk2M gathers thousands of accounts and manages thousands of connections per day including full audit trail connection tracking.

www.ewon.biz/talk2m

Technical characteristics:

Operating System	Windows Server 2008 or upper Windows 7 or upper (not recommended)
Database	MySQL 5.6
Web server	Apache 2.4 / PHP 5.5
Communication with eWON	HTTP or HTTPS
Configuration/Administration	Local or remote web console
Number of eWONs, tags	Unlimited
Number of history samples	Circular buffering, buffer size defined by user
Compatibilities	Compatible with all eWON Flexy and 4xxxCD models
	Compatible with Talk2M Pro service and M2U
	Compatible with eFive

Ordering Ref.:

SY10002	1 perpetual license, free updates
---------	-----------------------------------

About eWON Flexy:



The eWON Flexy is the first industrial modular M2M router and data gateway designed for OEMs and system integrators. The flexibility allows remote devices to be linked in an environment where communication technologies are constantly changing, and lets you communicate universally with the most varied field equipment, regardless of the protocol used.



www.ewon.biz/flexy

Headquarter

22 Av. Robert Schuman
1400 Nivelles
Belgium
Tel. : +32 67 895 800
info@ewon.biz

North American Office

2345 Murray Ave, suite #305
Pittsburgh, PA 15217
USA
Tel. : +1-412-586-5901
info@ewon.us

Japan Office

Dai 2 Izumi Shoji Bldg. 4 F,
2-6 Kojimachi 4-Chome,
Chiyoda-Ku, Tokyo 102-0083
Japan
Tel. : +81-3-6821-1655
info@ewon.co.jp

www.ewon.biz